

TPDL 2012

22.09.2013

Research Object Management Tools

DEMO

Raul Palma

Poznan Supercomputing and Networking Center

rpalma@man.poznan.pl

Software Architecture

Specifies **functionalities** required by a (workflow-centric) Research Object mgmt. and preservation infrastructure, along with a set of functional entities for their grouping and **categorization**

» Architecture principles

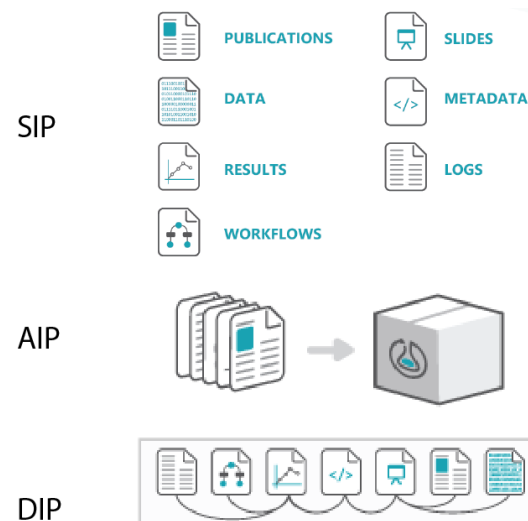
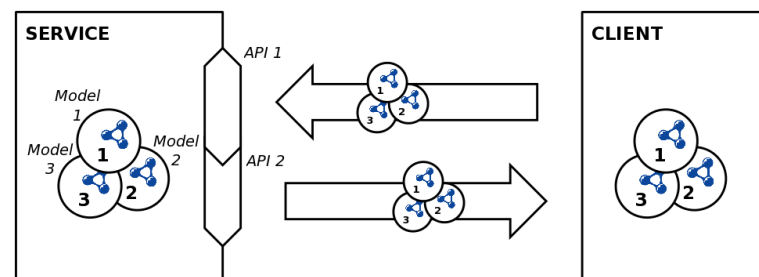
- » Adoption of **Linked Data** and **RESTful** approaches

» Architecture structure

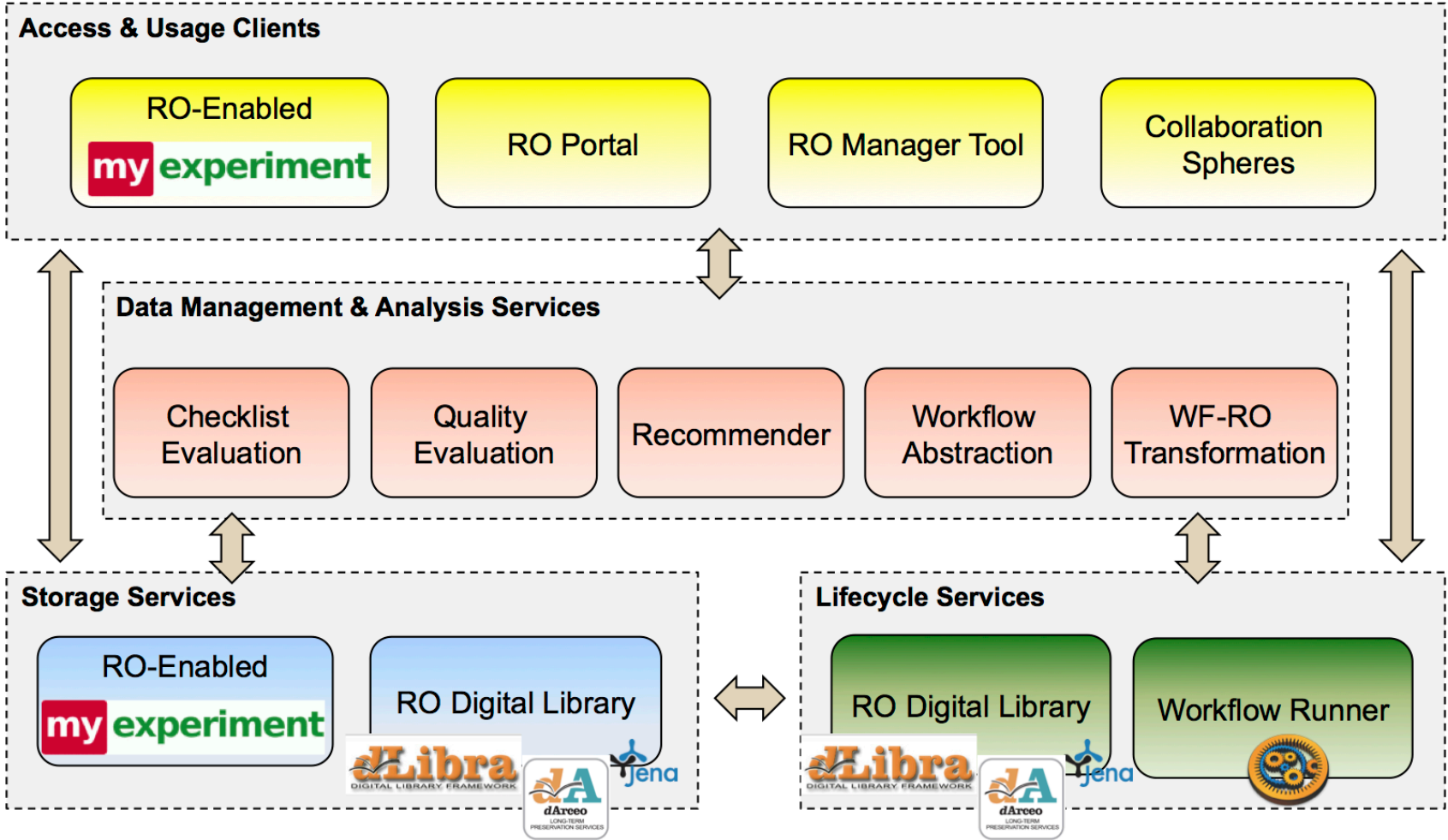
- » **Models:** data structures that encode the concepts and relationships of information
- » **APIs:** set of resources and their representations for guaranteed compatibility (of a service)
- » **Services:** implement functionality that is provided to multiple clients

» Compliance with preservation standards

- » Aligned with OAIS reference model & Merritt microservices

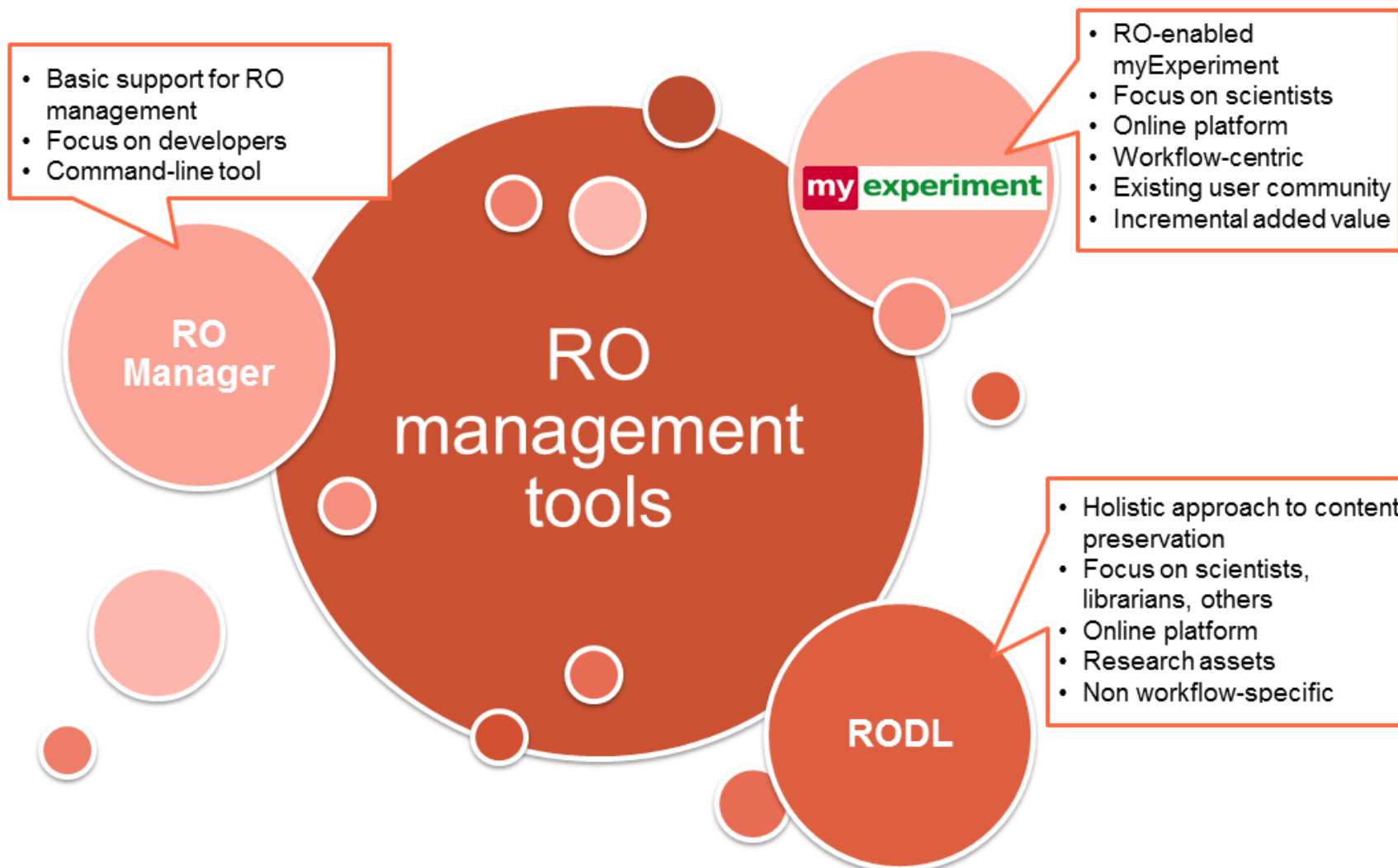


Technology



Live: <http://sandbox.wf4ever-project.org/> <http://alpha2.myexperiment.org/>

Portfolio of Research Object tools



Demo Introduction (1/2)

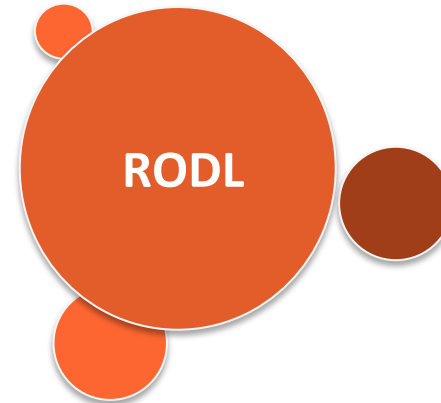
Show the process of building a research object from the music research experiment, with the purpose of **sharing, publising** and **preserving** the **experiment and its context**, in order to facilitate its **reusability, reproducibility** and **better understanding**.

- In particular, the following demo will show:
 - How to create a new research object
 - How to aggregate and annotate the artifacts related to the music research experiment.
 - How to capture the status of the research experiment at different moments in time, e.g., to share it with others, to cite it, to preserve it.
 - How to archive the research object once the research has been concluded, ensuring its preservation.
 - How to search and explore other research objects

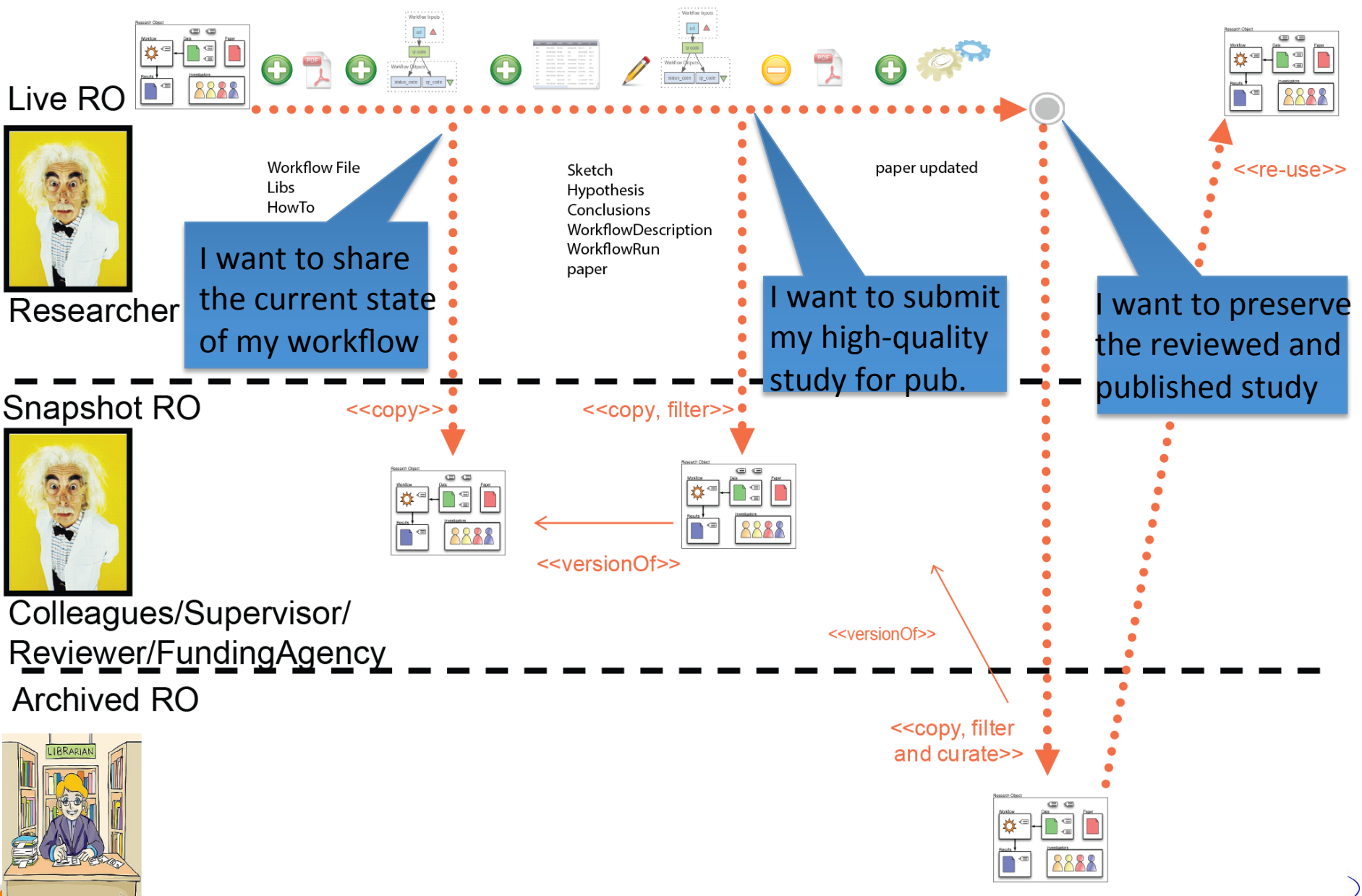
Demo Introduction (2/2)

Show how to **use** and **interact** with the **research object management tools**

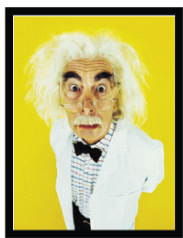
- In particular, in the demo the following tools will be shown:
 - Research Object Digital Library
 - RO Portal
 - Checklist Service
 - Wf-RO Service
 - Quality Service
 - Taverna



Demo context – sharing and preserving music research experiment



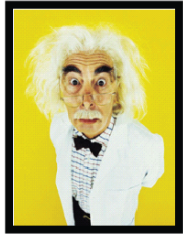
Live RO



Researcher

I want to share the current state of my workflow

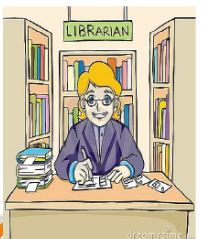
Snapshot RO



Colleagues/Supervisor/ Reviewer/Funding Agency

I want to submit my high-quality study for pub.

Archived RO



Public/Funding Agency

I want to preserve the reviewed and published study



References and Links

- Architecture:
Page, Palma, et al. From workflows to Research Objects: an architecture for preserving the semantics of science. Linked Science 2012. Boston, USA.
- Research Object Digital Library
Palma, Corcho, et al. Digital libraries for the preservation of research methods and associated artifacts. In Proceedings of the 1st International Workshop on Digital Preservation of Research Methods and Artefacts 2013. Indianapolis, USA.
- APIs overview:
<http://www.wf4ever-project.org/wf4ever-reference-implementation>
- Live Instances:
<http://sandbox.wf4ever-project.org/> <http://alpha2.myexperiment.org/>
- Source code:
<https://github.com/organizations/wf4ever>

RO-ify your work!

<http://researchobject.org/>

Thanks!

